

# Palos Verdes Democrats

Founded 1952



logo by  
Paul Conrad

## September 2016 Newsletter

P.O. Box 2234, Rolling Hills Est. CA 90274  
Visit Us on the Web at [www.pvpdemocrats.org](http://www.pvpdemocrats.org)  
"One of the oldest Democratic Clubs in California"

### COMING EVENTS

**Social time: 2pm**

#### SEPTEMBER MEETING

**DATE:** Sunday, September 18th

**MEETING TIME:** 2:30 - 4:30pm

**LOCATION:** Peninsula Center Library Community Room; 701 Silver Spur Rd, RHE

**TOPICS:** Empowering Teachers to Repair the World; Judicial Seat 42 race

**SPEAKERS:** Catherine Leys; Efarain Aceves

#### OCTOBER MEETING

**DATE:** Sunday, October 16th

**MEETING TIME:** 2:30 - 4:30pm

**LOCATION:** Peninsula Center Library Community Room; 701 Silver Spur Rd, RHE

**TOPIC:** The League of Women Voters explains the propositions on the November ballot

**SPEAKER:** LWV representatives

#### Inside This Month's Issue:

**September Membership Meeting**  
Page 1

**August Meeting Report** Page 1-2

**Dump Trump/Hadley Rally** Page 2-3

**PV Dems Bylaw Revisions** Page 3

**Al Muratsuchi Campaign Kick-off and Meet and Greet Party** Page 3

**Come Support Hillary** Page 3

**The True Cost, a Documentary**  
Page 3

### September Membership Meeting

First, we will hear from **Catherine Leys** of the EDUCATORS' INSTITUTE FOR HUMAN RIGHTS  
*Empowering teachers to repair the world.*

According to their website, the EIHR's mission is to develop "partnerships with teachers in countries recovering from conflict to provide training in the best practices on human rights, genocide prevention, and Holocaust education. We intend that EIHR will help educators and their students worldwide to better understand the history of mass atrocities, including the Holocaust, and apply these lessons to their lives and the world today in order to create a more tolerant, educated, and peaceful future."

Catherine will tell us about EIHR's work in Rwanda and take your questions about that work and the EIHR in general.

Next, we will hear from judicial candidate, **Efrain Aceves**, who is running for seat 42 against Alicia Molina. We heard from his opponent in May and July, you may recall. Mr. Aceves was born in Mexico and raised in Whittier. He excelled in school and was accepted to and attended UCLA, the first person in his family to attain a college degree. He continued on at UCLA for law school, graduating in 1997 and joining the LA County District Attorney's office the same year. There he prosecutes child molestation and domestic violence cases. He is very active in the community and he sits on the board of the Mexican American Bar Association, the Whittier City School District Board of Education, and the PIH Health System Board of Directors.

So, please come to hear from these two speakers or to enjoy the company of like-minded Democrats or just come for the delicious homemade goodies.

### August Meeting Report by Carol Moeller

#### 2016 Supreme Court Review

**Superior Court Judge Tom Long** educated all of us by elaborating on Erwin Chemerinsky's review of the 2015-2016 Supreme Court decisions. Irvine Law School Dean Erwin Chemerinsky, former **Superior Court Judge Tom Long** Dean of George Washington Law School and civil rights law expert, Frederick Lawrence and Slate Magazine and author of "Supreme Court Dispatches" and "Jurisprudence", Dahlia Lithwick,



**Justice Scalia's** seat has been vacant since February 13, 2016, and the subsequent increase in workload for the remaining justices has resulted in just 63 cases being heard this term, which is the lowest since 1932! The refusal of the Republicans to hold hearings (and thus delaying a vote for his replacement until possibly January 2017), means that most of the 16-17 term will also be conducted short-staffed and with a 4:4 ideological split. Refusing to hear Supreme Court nominations by the Senate could become a dangerous precedent (maybe even on lower court nominations as well) and could seriously cripple our judicial system.

The 5:3 **Whole Women's Health** decision includes former Justice O'Connor's "undue burden" consideration in the opinion written by Justice Breyer with a concurrence written by Justice Ginsburg and is particularly significant because Justice Kennedy joined with the liberals. This decision has provided fodder for favorable decisions in women's rights cases across the country.

The **Fisher vs Univ of Texas II** 4:3 decision

*continued on page 2*

*continued from page 1*

(Justice Kagen recused herself) is the first time in all his years on the bench that Justice Kennedy has sided with liberals in an affirmative action vote.

**Evanwel vs Abbott** is a unanimous decision that upholds the constitutionality of using total population vs eligible voters for redistricting purposes. Had this been decided differently, centuries of settled practice would have been tossed aside.

**United States vs Texas** is a 4:4 decision on Texas' injunction on President Obama's executive action regarding DAPA immigration. This upheld a lower court's decision that the Constitution was violated by this executive action. Dean Chemerinsky quipped that he "just liked the title of this case".

**Friedrichs vs California Teachers' Association** is another 4:4 decision that also upheld a lower court decision. This allows unions to collect fees from workers who choose not to join the union but who benefit from the unions' collective bargaining activities. This was heard while Justice Scalia was still alive, and would likely have gone the other way had the actual vote been held prior to his death.

**Utah vs Strieff** was a 5:3 decision with Justice Breyer joining with conservatives in establishing what constitutes an illegal search.

**Universal Health Services vs United States ex rel. Escobar** was a unanimous decision that was not discussed by the panel, but Tom Long feels this one is an important consumer safeguard. This establishes that institutions offering services but failing to disclose known extenuating restrictions (implied false certification), may be held liable.

An audience member asked if we have a

Presidential election result similar to Bush v Gore, what might happen with the 4:4 current ideological split in the court? The answer was that Justice Roberts would not accept such a case.

Finally, a question came up about the **Garland nomination**. The panel felt that President Obama sincerely feels Merrick Garland is a great candidate and would stand by his nomination, and Hillary Clinton would as well.

## Dump Hadley/Trump Rally in RPV's Founders Park

By Carol Moeller

In Founders Park, public land adjacent to the Trump Golf Course, the PV Democrats were well represented at a rally denouncing Republican candidates. **Eric Bowman**, head of our LA County Democratic Party, and members of many other clubs in the South Bay were also on hand.

**Congressman Ted Lieu** mentioned that to launch a nuclear weapon, only the President



*Ted Lieu, Congressman  
33rd CA Congressional District*



*Eric Bowman kicking off the Dump Hadley/Trump Rally at Founders Park, a public park adjacent to the Trump Golf course*

and his or her appointee in the National Security Agency need to agree! This is an especially horrifying revelation, considering the possibility of a Trump presidency.

State Assembly candidate for the 66th District, **Al Muratsuchi**, emphasized that his opponent refuses to condemn Trump's policies, and gave immigration as one example. Poor



*Al Muratsuchi, Candidate for CA 66th Assembly District*

treatment of veterans and their families is another area where Mr. Muratsuchi indicated his Republican opponent simply overlooks behavior that should be soundly repudiated. Lack of respect for the environment is yet



*Rally at Founders Park overlooking the ocean*

*continued on page 3*

# PRIORITYONE

## PRINTING ★ COPYING ★ GRAPHICS

Phone (310) 831-8804 • FAX (310) 833-9598

E-mail - [priority1@earthlink.net](mailto:priority1@earthlink.net)

Website: [www.priorityoneprinting.com](http://www.priorityoneprinting.com)

Newsletter Printing Donated by PRIORITYONE



continued from page 2

another of the many examples where both Trump and Hadley share values.

A former Torrance Teachers Association president also spoke on behalf of Mr. Muratsuchi, as did PV Democrats' president **Lynn Bommer**, and Beach Cities Democrats' Teachers Association President **Bobbie**

**Buscher**. California Democratic Party Regional Director **Sergio Carrillo** gave his endorsement for Al in Spanish.



*Julie Shankle, Former Torrance Democrats' Teachers Association President*



*Maria Martinez with Trump pinata; subject of many photo ops*



*Sergio Carrillo, CA Democratic Party Regional Director*

## PV Democrats Bylaws Revision

By Carol Moeller

As a club chartered by the Los Angeles County Democratic Party, we are required to follow their guidelines, and one of their requirements had been that every member of LACDP chartered clubs must be a registered Democrat. The good news is that they have loosened their requirements a bit in that they are now allowing us to accept those registered as No Party Preference (NPP), which is the nomenclature that replaced the moniker Decline to State, and which many consider as registered Independent. Unfortunately, the LACDP stipulates that NPP members are not to be granted voting privileges, and to our regret this does create a bit of a two tiered system, but at least the Party is now turning in favor of increased inclusion. So with hope for further increased inclusivity, your board members are asking our membership to vote to amend our bylaws as follows:

2.1 ELIGIBILITY for club membership is limited to one of two voter registration categories:

a. Registered Democrats as published in the precinct lists issued by the Registrar of Voters as

## Al Muratsuchi Campaign Kick-off and Meet & Greet Party

Come and support Al Muratsuchi's campaign kick-off event.

Date: Saturday, September 10th, 11am

Place: Al Muratsuchi's Campaign Headquarters, 1513 Sepulveda Blvd, Torrance.

Afterwards, 2-4pm, Rascha and David Hall are opening their home at 6603 Madeline Cove Dr, RPV, to meet Al Muratsuchi. RSVP (310) 377-7334.

Come and support our candidate and our club members!

## Come support Hillary!

By Lynn Bommer

Remember that voters who come out to vote for a Democratic presidential candidate also vote for Democratic candidates down the ticket. Volunteering for Hillary also gets out the vote for Al Muratsuchi and Ted Lieu!

Let's light a fire under Democratic voters! Come do your part! Volunteer!

RSVP at [www.Hillaryclinton.com/events](http://www.Hillaryclinton.com/events).

This is not an election that you want to sit out! Our future depends upon it!

well as those ineligible to register who express the intent to register as a Democrat upon becoming eligible.

b. Persons who are registered as NPP (No Party Preference) are also eligible to become members, with the exception they may not participate in club voting.

## The True Cost, a Documentary

By Carol Moeller

Do you know what "fast fashion" is? Similar in concept to fast food, "fast fashion" employers pay rock-bottom wages under unhealthy working conditions and make inferior, chemically-laden products. The inspiration for *The True Cost* documentary (available on Netflix) was the 2013 Rana Plaza factory collapse in Bangladesh, which killed more than 1,100 garment workers.

The film points to an incredible rise in apparel consumption: 80 billion pieces of clothing are purchased worldwide each year, which is 4 times that produced just a decade ago. The richest man in Europe (the owner of the department

store Zara) provides outrageously low Walmart-style wages to many of the 40 million overseas garment workers who make clothes for his company. Salaries for these workers have actually been dropping, sometimes below subsistence levels, while his company bottom line has soared.

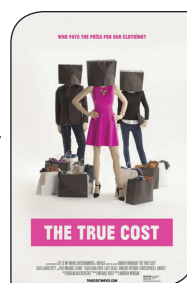
In addition to the stark economic inequalities, the environmental cost is enormous. The average American discards 82 pounds of textile waste a year, but only about 10% of what is donated actually gets sold in thrift stores. The rest is dumped into US landfills or into Third World countries who frequently are not able to use the clothing (i.e. sweaters sent to tropical countries).

**The apparel industry accounts for 10% of global carbon emissions and remains the #2 largest industrial polluter, second only to the oil industry!** In addition to carbon emissions, chemicals used in the regulation-skirting "fast fashion" industry frequently find their way into the environment, especially waterways in third world countries. Even though our skin is the largest organ in our body, apparel makers are not required to list the chemicals that could leach through our skin from these clothes.

Besides the preferred "shop in your closet" concept, suggested apparel companies who provide fair wages and respect the environment are linked below. Consider a gift certificate from one of these companies:

<http://www.shopglobalmamas.com/>  
<http://www.marigoldfairtradeclothing.com/>  
<http://www.maggiesorganics.com/>  
<http://www.marketplaceindia.com/>  
<http://www.matatraders.com/>  
<http://www.peopletree.co.uk/>  
<http://underthenile.com/>

With small changes in shopping habits, you can make a global difference. Ask: *Who made my clothes?*





### Palos Verdes Democrats Officers for 2016-2017

President: Lynn Bommer 310-374-1188

President Emeritus: Carol Moeller 310-541-5526

1st Vice President: Kathy Bradford 310-265-9812

2nd Vice President: Connie Sullivan 310-378-1554

Recording Secretary: Rascha Hall 310-377-7334

Corresponding Secretary: Arlene Korb 310-544-7203

Treasurer: Al Shadbourn 310-326-4953

Parliamentarian: Craig Williams 301-265-9812

Membership: Susie Boone 310-686-0455

Publicity: David Hall 310-377-7334

Newsletter Editor:

Hospitality: Teresa Savo 310-541-1139

Precinct Captains: Connie Sullivan 310-378-1554

Dee Dee Gonzalez 210-367-9727

LACDP Associate Member: Megan Crawford 310-766-8222

## Palos Verdes Democrats

Founded in 1952 - One of the oldest and largest Democratic Clubs in California

[www.pvpdemocrats.org](http://www.pvpdemocrats.org)

As a member of  
the Palos Verdes  
Democrats,  
you can:

- Meet other Democrats
- Meet and get to know your elected officials, raise funds and work for candidates
- Attend special events and monthly meetings
- Hear speakers and discuss issues of local, state and national import

**Please send your membership form to P.O. Box 2234, Rolling Hills Est. Ca 90274**  
**Please fill in all items to ensure that we have your full and correct current information.**

Name \_\_\_\_\_ ☐ I am a registered Democrat  
Name\* \_\_\_\_\_ ☐ I am a registered Democrat

\* Fill in if Applying as a Family - two memberships

Residence Address \_\_\_\_\_ Phone \_\_\_\_\_

City \_\_\_\_\_ Zip \_\_\_\_\_ Cell \_\_\_\_\_

Occupation \_\_\_\_\_

Employer \_\_\_\_\_

E-mail Address \_\_\_\_\_

\*Select One: ☐ Individual: \$ 25.00/Year ☐ Family Membership \$40.00/Year  
☐ Young Adult \$10.00/Year

Amount enclosed \_\_\_\_\_ ☐ Renewal ☐ New Member

Please contact me to help in the following areas:

- ☐ Hospitality ☐ Newsletter ☐ Membership ☐ Publicity ☐ Correspondence  
☐ Voter Registration ☐ Campaign Work ☐ Website/Facebook ☐ Phone Tree  
☐ I might offer my home for a meeting or social event